

GENERAL NOTES:

1. ALL FASTENERS SHALL BE IN ACCORDANCE WITH THESE DRAWINGS. SPECIFIED ANCHOR EMBED TO BASE MATERIAL SHALL BE BEYOND WALL FINISH OR STUCCO.
2. OPENINGS, BUCKING & BUCKING FASTENERS MUST BE PROPERLY DESIGNED & INSTALLED TO TRANSFER WIND LOADS TO THE STRUCTURE.
3. THESE NON-IMPACT RATED PRODUCT INSTALLATIONS ARE IN ACCORDANCE WITH AND MEET THE REQUIREMENTS OF THE FLORIDA BUILDING CODE (FBC).
4. ALL ANCHORS SECURING PRODUCT FRAMES TO PRESSURE TREATED BUCKS OR WOOD FRAMING SHALL BE CAPABLE OF RESISTING CORROSION CAUSED BY THE PRESSURE TREATING CHEMICALS IN THE WOOD.
5. MATERIALS, INCLUDING BUT NOT LIMITED TO STEEL SCREWS, THAT COME INTO CONTACT WITH OTHER DISSIMILAR MATERIALS SHALL MEET THE REQUIREMENTS OF FLORIDA BUILDING CODE CHAPTER 20.
6. TO THE BEST OF OUR KNOWLEDGE, THE PRODUCT SHOWN HEREIN IS CERTIFIED & QUALITY ASSURED BY A FLORIDA STATE APPROVED CERTIFICATION/QA ENTITY & SHALL BE LABELED IN ACCORDANCE WITH THE FBC AND THE FLORIDA DEPARTMENT OF BUSINESS & PROFESSIONAL REGULATION SPECIFICATIONS. PRODUCT ASSEMBLY IS NOT PART OF THIS DRAWING AND SHALL BE IN ACCORDANCE WITH THE MANUFACTURER'S QUALITY ASSURANCE SPECIFICATIONS & TESTING REPORTS.
7. CERTIFICATION OF THESE PRODUCT INSTALLATIONS SHALL BE CONSIDERED VOID IF ANY OF THE FOLLOWING APPLY: 1) PRODUCT IS INSTALLED WITHOUT A BUILDING PERMIT FROM THE APPLICABLE LOCAL BUILDING DEPARTMENT. 2) PRODUCT IS INSTALLED BY ANYONE OTHER THAN A LICENSED CONTRACTOR EXPERIENCED WITH INSTALLATIONS OF THIS TYPE OF PRODUCT. 3) IF CHANGES HAVE OCCURRED TO THE PRODUCT'S CERTIFICATION ENTITY'S CERTIFICATE THAT CAUSE THESE INSTALLATIONS TO BE INCORRECT OR INCONSISTENT WITH WHAT HAS BEEN TESTED.
8. THE LEAST DESIGN PRESSURE SPECIFIED EITHER IN THIS DRAWING OR IN THE PRODUCTS CERTIFICATION SHALL CONTROL FOR THE INSTALLED PRODUCT.
9. THESE DRAWINGS CERTIFY THE PRODUCT INSTALLATION ONLY. WATER PROOFING OF THE INSTALLED PRODUCT IS NOT PART OF THIS INSTALLATION CERTIFICATION. THAT RESPONSIBILITY SHALL BE THAT OF THE MANUFACTURER &/OR INSTALLER.

FRAME ANCHOR REQUIREMENTS TABLE

OPENING TYPE (SUBSTRATE)	FRAME/CLIP/NAIL FIN TO OPENING FASTENER TYPE	MINIMUM EMBED	MINIMUM EDGE DIST.
(4) MIN. 2X WOOD FRAME OR BUCK (MIN. GR. 3 & G=0.55)	NO. 10 SMS OR WOOD SCREW	1 1/4"	3/4"
MIN. 18 GA. 33 KSI METAL STUD	NO. 10 GR. 5 SELF TAP/DRILL SCREW	FULL	1/2"
MIN. 1/8" THK A36 STEEL	NO. 10 GR. 5 SELF TAP/DRILL SCREW	FULL	1/2"
MIN. 1/8" THK 6063-T5 ALUM.	NO. 10 GR. 5 SELF TAP/DRILL SCREW	FULL	1/2"
C-90 CMU/2500 PSI CONCRETE	(1) 1/4" CONCRETE SCREW	1 1/4"	2"
(2) INSTALLATION CLIP SCREWS (BENT & 3-PIECE CLIPS)			
(4) MIN. 2X WOOD FRAME OR BUCK (MIN. GR. 3 & G=0.55)	NO. 8 X 1 1/2" SMS	1 3/8"	(2) N/A
MIN. 1/8" THK A36 STEEL	NO. 8 GR. 5 SELF TAP/DRILL SCREW	FULL	(2) N/A
MIN. 1/8" THK 6063-T5 ALUM.	NO. 8 GR. 5 SELF TAP/DRILL SCREW	FULL	(2) N/A
INSTALLATION CLIP SCREWS (STRAIGHT CLIPS)			
MIN. 2X6 WOOD FRAME OR BUCK (MIN. GR. 3 & G=0.55)	NO. 8 X 1 1/2" SMS	1 3/8"	3/4"
MIN. 18 GA. 33 KSI METAL STUD	NO. 8 GR. 5 SELF TAP/DRILL SCREW	FULL	1/2"
MIN. 1/8" THK A36 STEEL	NO. 8 GR. 5 SELF TAP/DRILL SCREW	FULL	1/2"
MIN. 1/8" THK 6063-T5 ALUM.	NO. 8 GR. 5 SELF TAP/DRILL SCREW	FULL	1/2"
(3) NAILING FIN FASTENERS			
(4) MIN. 2X WOOD FRAME OR BUCK (MIN. GR. 3 & G=0.55)	NO. 8 X 1 1/2" SMS	1 3/8"	1/2"
MIN. 2X WOOD FRAME OR BUCK (MIN. GR. 3 & G=0.55)	11 GA. ROOFING NAIL	1 3/8"	1/2"
MIN. 1/8" THK A36 STEEL	NO. 8 GR. 5 SELF TAP/DRILL SCREW	FULL	1/2"
MIN. 1/8" THK 6063-T5 ALUM.	NO. 8 GR. 5 SELF TAP/DRILL SCREW	FULL	1/2"
STRIKE SCREWS			
(4) MIN. 2X WOOD FRAME OR BUCK (MIN. GR. 3 & G=0.55)	NO. 8 SMS OR WOOD SCREW	1 1/4"	3/4"
MIN. 18 GA. 33 KSI METAL STUD	NO. 8 GR. 5 SELF TAP/DRILL SCREW	FULL	1/2"
MIN. 1/8" THK A36 STEEL	NO. 8 GR. 5 SELF TAP/DRILL SCREW	FULL	1/2"
MIN. 1/8" THK 6063-T5 ALUM.	NO. 8 GR. 5 SELF TAP/DRILL SCREW	FULL	1/2"
C-90 CMU/2500 PSI CONCRETE	(1) 3/16" CONCRETE SCREW	1 1/4"	2"

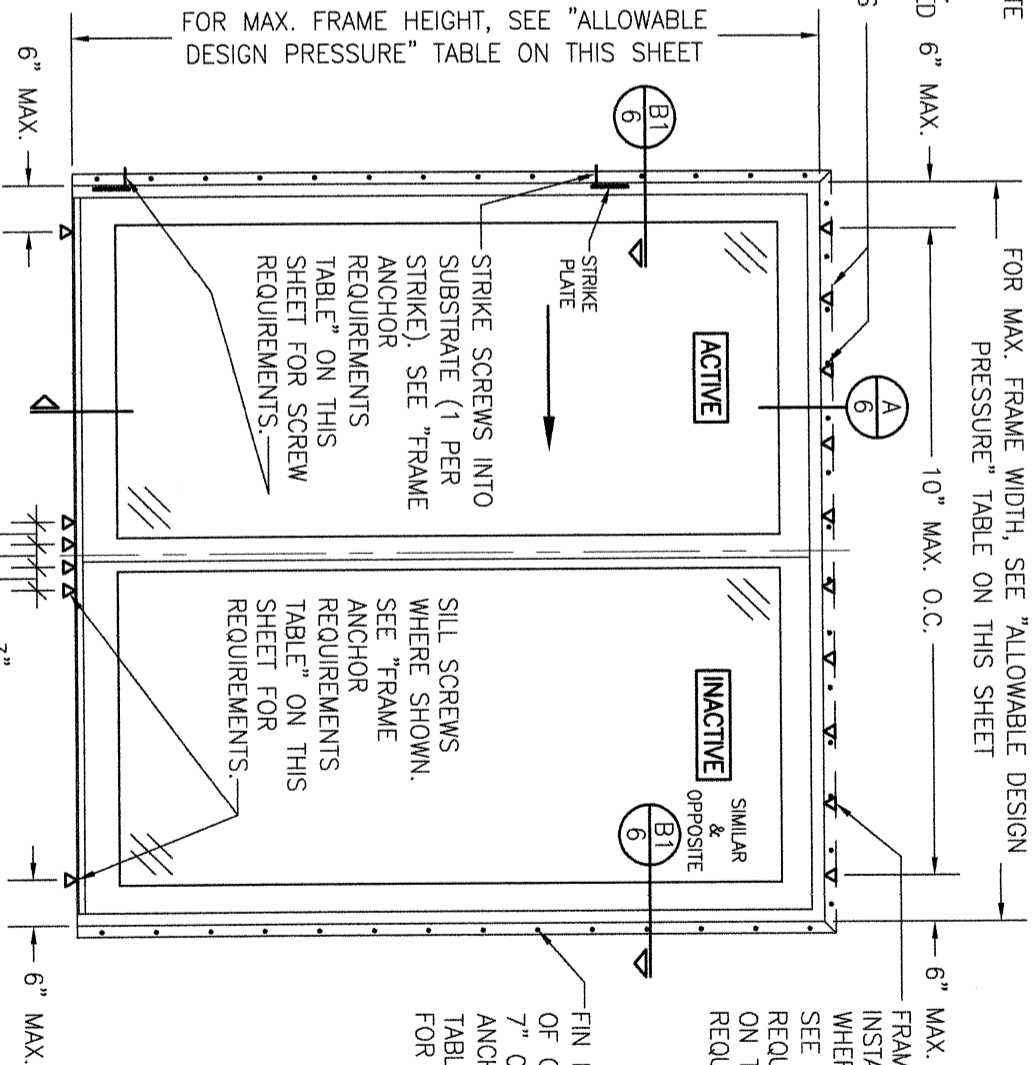
NAIL FIN AND ANCHORING OF NAIL FIN IS OPTIONAL AT HEAD & SHALL NOT ACT AS A SUBSTITUTE FOR THE FRAME ANCHORS SPECIFIED. FIN MAY BE REMOVED WHEN REQUIRED BY OPENING CONDITIONS

INSTALLATION EVALUATION IS BASED ON APPLICABLE ANCHOR STANDARDS AND/OR INFORMATION & RESULTS FROM APPLICABLE TEST REPORTS. THE FLORIDA BUILDING CODE VERSION CONSIDERED WITH THE EVALUATION WAS THAT IN FORCE AT THE TIME OF THE EVALUATION. IN THE EVENT OF CODE VERSION CHANGES/UPDATES OR IN THE EVENT THAT NEW OR ADDITIONAL TESTING IS COMPLETED WITH THE REFERENCED PRODUCT, PRIOR TO STATING CODE COMPLIANCE WITH THE STATE, THE MANUFACTURER SHALL CONFIRM WITH THE INSTALLATION EVALUATION ENGINEER OF RECORD THAT THE INSTALLATIONS SPECIFIED HERE-IN ARE CURRENT WITH THE THEN CURRENT TESTING, CODE AND APPLICABLE STANDARDS.

EDGE DISTANCE MAY BE DECREASED TO 1/2" IF SCREWS ARE ANGLED 15 TO 20 DEGREES AWAY FROM THE EDGE.

ANCHOR/SUBSTRATE EVALUATION NOTE:
ALL ANCHORS IN THEIR SPECIFIED SUBSTRATES HAVE BEEN ANALYZED IN ACCORDANCE WITH THEIR APPLICABLE STANDARDS AND ARE FOUND TO BE CAPABLE OF SUPPORTING ALL LOADS IMPOSED ON THEM UNDER THE GUIDELINES OF THIS DOCUMENT. ANY SUBSTRATES OR CONDITIONS OUTSIDE OF WHAT IS SHOWN HERE-IN SHALL BE SUBJECT TO JOB SPECIFIC ENGINEER'S REVIEW & CERTIFICATION.

INSTALLATION NOTE:
WHEN NECESSARY, INSTALLATION METHODS MAY BE MIXED WITH ANY ONE WINDOW SUCH THAT INDIVIDUAL SIDES OF THE WINDOW MAY USE ONE OR THE OTHER ANCHOR METHOD (EXAMPLE: LEFT SIDE MAY USE FRAME SCREWS METHOD WHILE OTHER SIDES USE FIN)



THESE DRAWINGS ARE APPLICABLE ONLY TO THE PRODUCT SPECIFIED. THEY MAY NOT BE USED FOR THE ASSEMBLY AND/OR INSTALLATION OF ANY OTHER PRODUCT NOR MAY THEY BE USED FOR RATIONAL AND/OR LOCAL APPROVAL OF ANY PRODUCT NOT PRODUCED BY THE MANUFACTURER STATED ON THESE DRAWINGS.

FOR MAX. FRAME WIDTH, SEE "ALLOWABLE DESIGN PRESSURE" TABLE ON THIS SHEET

FOR MAX. FRAME HEIGHT, SEE "ALLOWABLE DESIGN PRESSURE" TABLE ON THIS SHEET

FIN FASTENER WITHIN 4" OF CORNERS & 5" TO 7" O.C. SEE "FRAME ANCHOR REQUIREMENTS TABLE" ON THIS SHEET FOR REQUIREMENTS.

FRAME SCREWS OR INSTALLATION CLIPS WHERE SHOWN AT HEAD. SEE "FRAME ANCHOR REQUIREMENTS TABLE" ON THIS SHEET FOR REQUIREMENTS.

**EXTERIOR ELEVATION:
2-PANEL SLIDING DOOR DOOR**
(NAIL FIN MOUNT CONDITION)
SCALE: 1/2" = 1'-0"

ALLOWABLE DESIGN PRESSURE
(2-PANEL SLIDING DOOR)

(1) DOOR STYLE	MAX. FRAME WIDTH (IN.)	MAX. FRAME HEIGHT (IN.)	ALLOWABLE PRESSURE (+/- PSF)
TEMPORARY	95 1/4	95 1/2	40
FRENCH	95 1/4	95 1/2	50
FRENCH	95 1/4	82	55
FRENCH	71 1/4	95 1/2	60

(1) TEMPORARY & FRENCH ARE THE SAME EXCEPT THE DOOR PANEL STILES & RAILS OF THE FRENCH ARE TALLER THAN THE TEMPORARY.

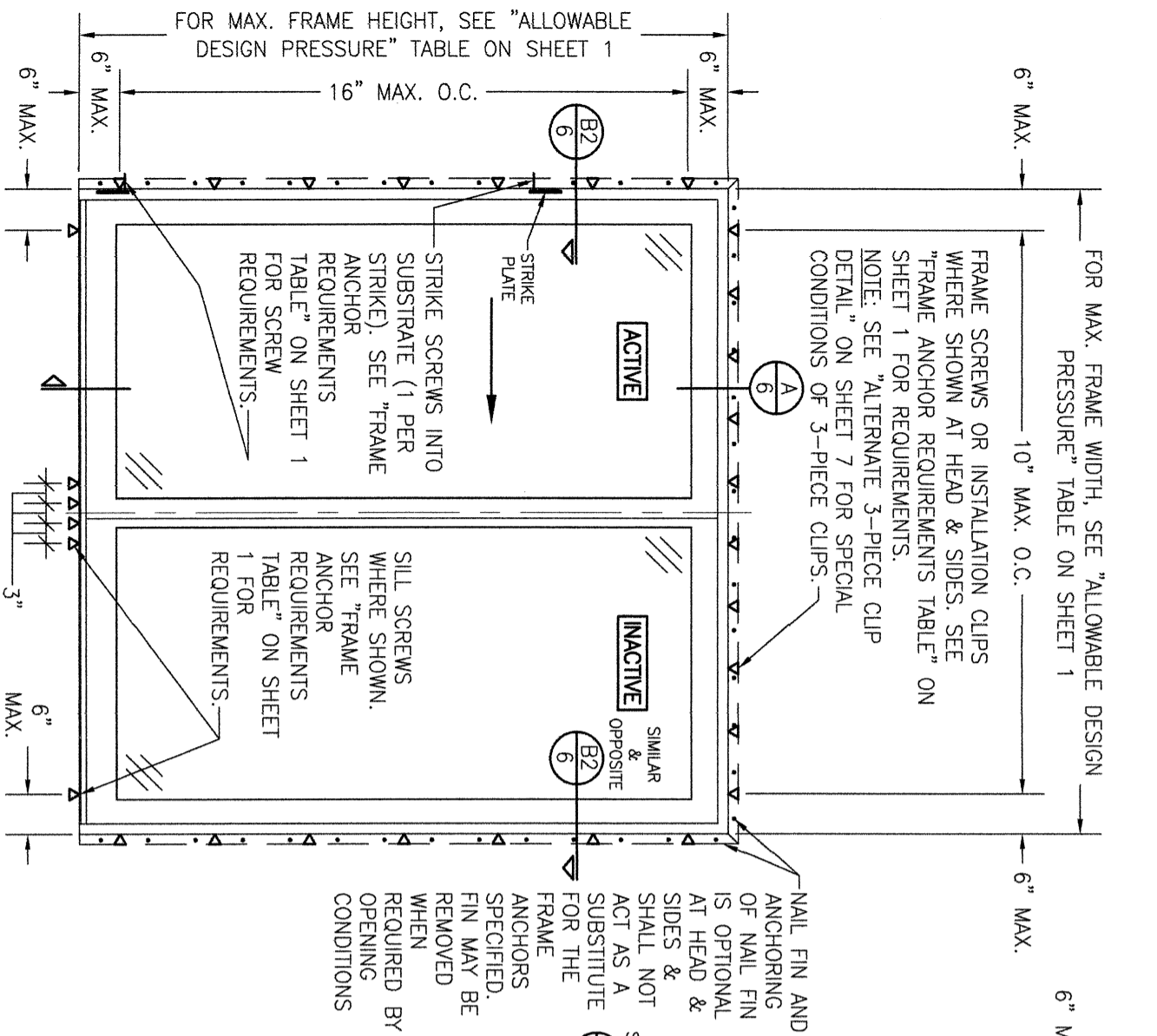
NO.	REVISION DESCRIPTION	BY	DATE
A1	ALTERNATE ANCHOR CONDITIONS	W.R.M.	10/27/09
B1	UPDATE PER NEW TESTING	W.R.M.	07/05/11
C1	UPDATE PER NEW TESTING	W.R.M.	03/18/13
D1	UPDATE PER NEW TESTING	W.W.S.	03/23/16
E1	ADDED NEW CLIP INSTALL OPTION	W.W.S.	06/19/24

PELLA CORPORATION
102 MAIN STREET
PELLA, IA 50219
641-621-1000

W. W. SCHAEFER ENGINEERING & CONSULTING, P.A.
25601 AYSEN DRIVE
PUNTA GORDA, FL 33983
PHONE: 561-744-3424

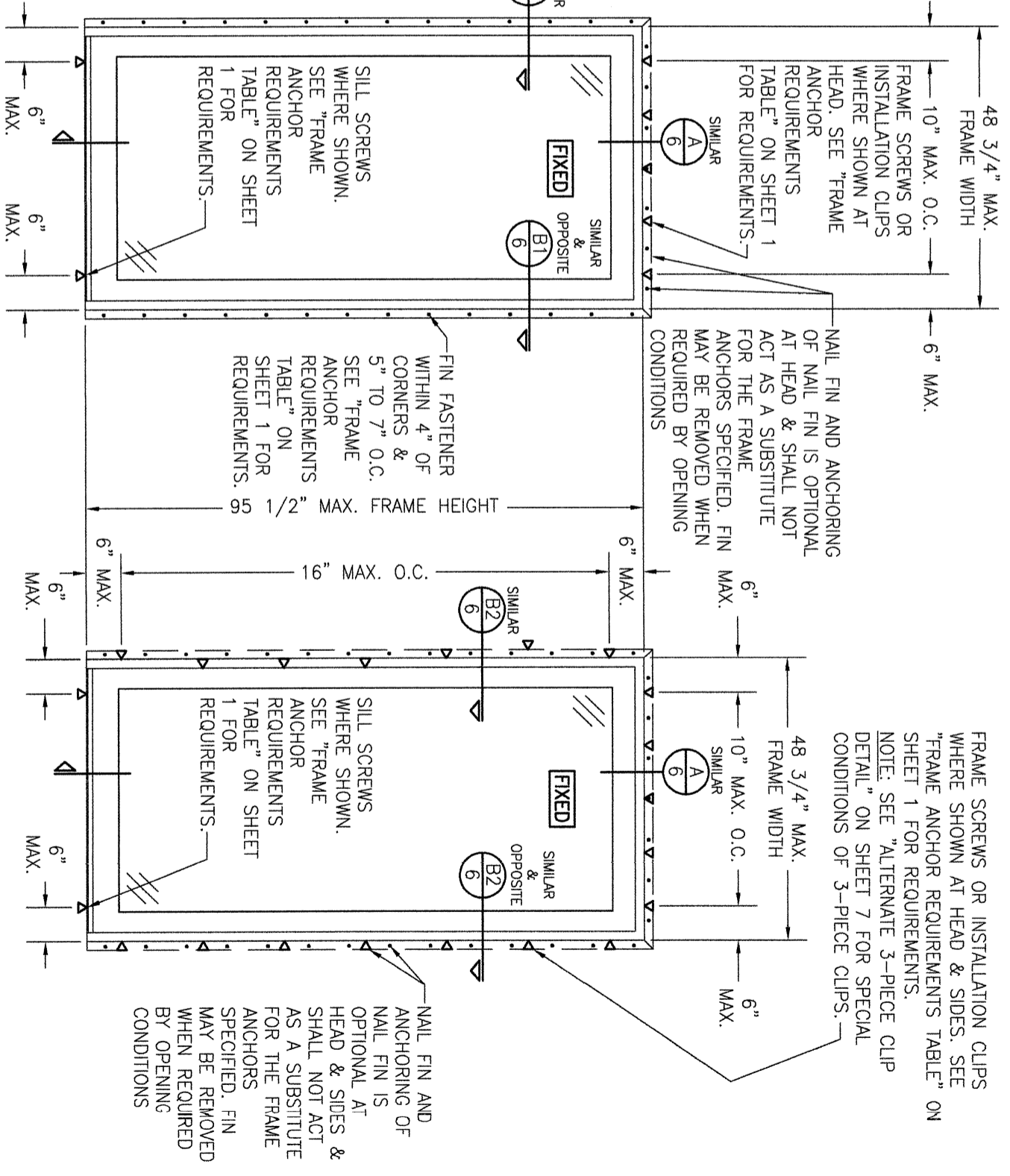
CERTIFICATION
WARREN W. SCHAEFER, P.E.
P.E. NO. 44135

DRAWING NO. **1659**
SHEET NO. **1** OF **8**



EXTERIOR ELEVATION:
2-PANEL SLIDING DOOR
 SCALE: 1/2" = 1'-0"
 (FRAME SCREW OR CLIP MOUNT CONDITION)

ALLOWABLE DESIGN PRESSURE (2-PANEL SLIDING DOOR)
SEE 2-PANEL SLIDING DOOR TABLE ON SHEET 1




EXTERIOR ELEVATION:
SINGLE FIXED PANEL DOOR
 SCALE: 1/2" = 1'-0"
 (NAIL FIN MOUNT CONDITION)

EXTERIOR ELEVATION:
SINGLE FIXED PANEL DOOR
 SCALE: 1/2" = 1'-0"
 (FRAME SCREW OR CLIP MOUNT CONDITION)

ALLOWABLE DESIGN PRESSURE (CONTEMPORARY & FRENCH STYLE SINGLE FIXED PANEL DOOR)
+/- 60 PSF

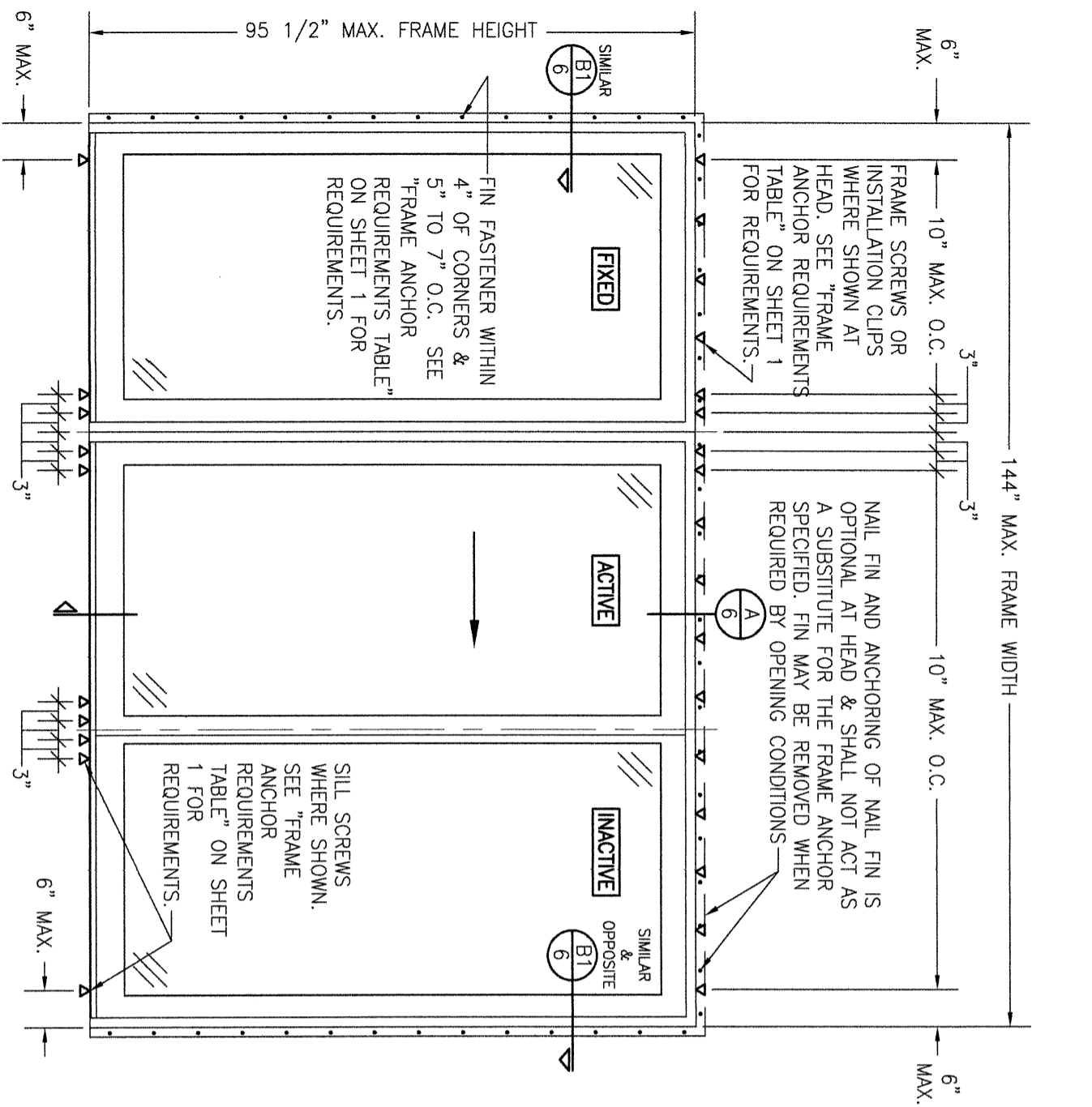
(1) CONTEMPORARY & FRENCH ARE THE SAME EXCEPT THE DOOR PANEL STILES & RAILS OF THE FRENCH ARE TALLER THAN THE CONTEMPORARY.

NO.	REVISION DESCRIPTION	BY	DATE

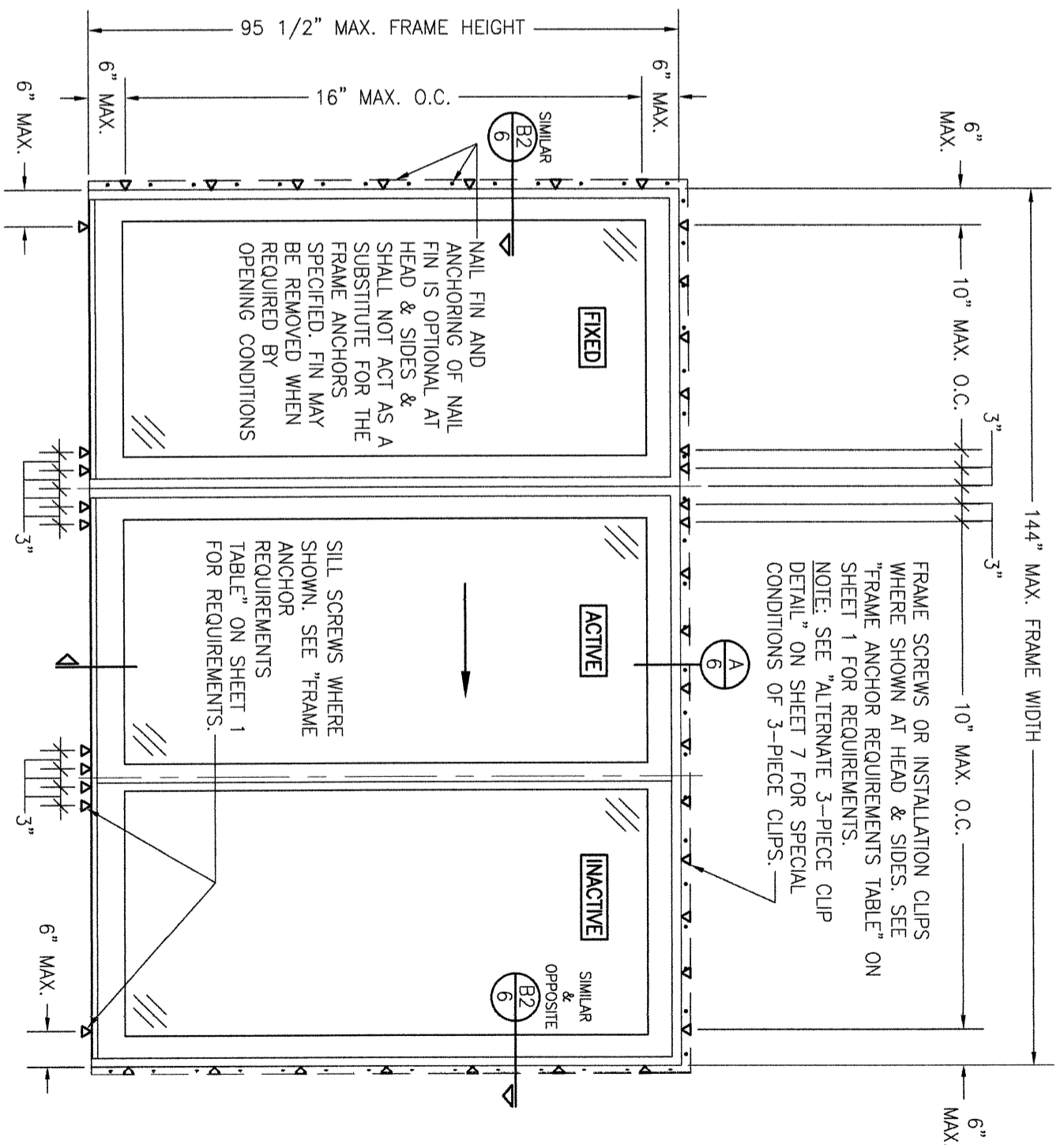
DRAWING TITLE LIFESTYLE WITH HGP SERIES FRENCH & CONTEMPORARY NON-IMPACT SLIDING DOOR	
CONSULTANTS W. W. SCHAEFER ENGINEERING & CONSULTING, P.A. 25601 AYSEN DRIVE PUNTA GORDA, FL 33983 PHONE: 561-744-3424	MANUFACTURER  PELLA CORPORATION 102 MAIN STREET PELLA, IA 50219 641-621-1000

CERTIFICATION	DRAWING NO. 1659
WARREN W. SCHAEFER, P.E. P.E. NO. 44135	REV. E
SHEET NO. 2 OF 8	

DRAWN BY: W.R.M.
 CHECKED BY: W.S.
 DATE: 04/13/09



EXTERIOR ELEVATION:
2-PANEL SLIDING DOOR WITH SIDELIGHT
 (NAIL FIN MOUNT CONDITION)
 SCALE: 1/2" = 1'-0"



EXTERIOR ELEVATION:
2-PANEL SLIDING DOOR WITH SIDELIGHT
 (FRAME SCREW OR CLIP MOUNT CONDITION)
 SCALE: 1/2" = 1'-0"


ALLOWABLE DESIGN PRESSURE
(CONTEMPORARY & FRENCH STYLE 2-PANEL SLIDING DOOR WITH SIDELIGHT)
+/- 40 PSF
(1) CONTEMPORARY & FRENCH ARE THE SAME EXCEPT THE DOOR PANEL STILES & RAILS OF THE FRENCH ARE TALLER THAN THE CONTEMPORARY.

NO.	REVISION DESCRIPTION	BY	DATE

DRAWN BY: W.R.M.
 CHECKED BY: W.S.
 DATE: 04/13/09

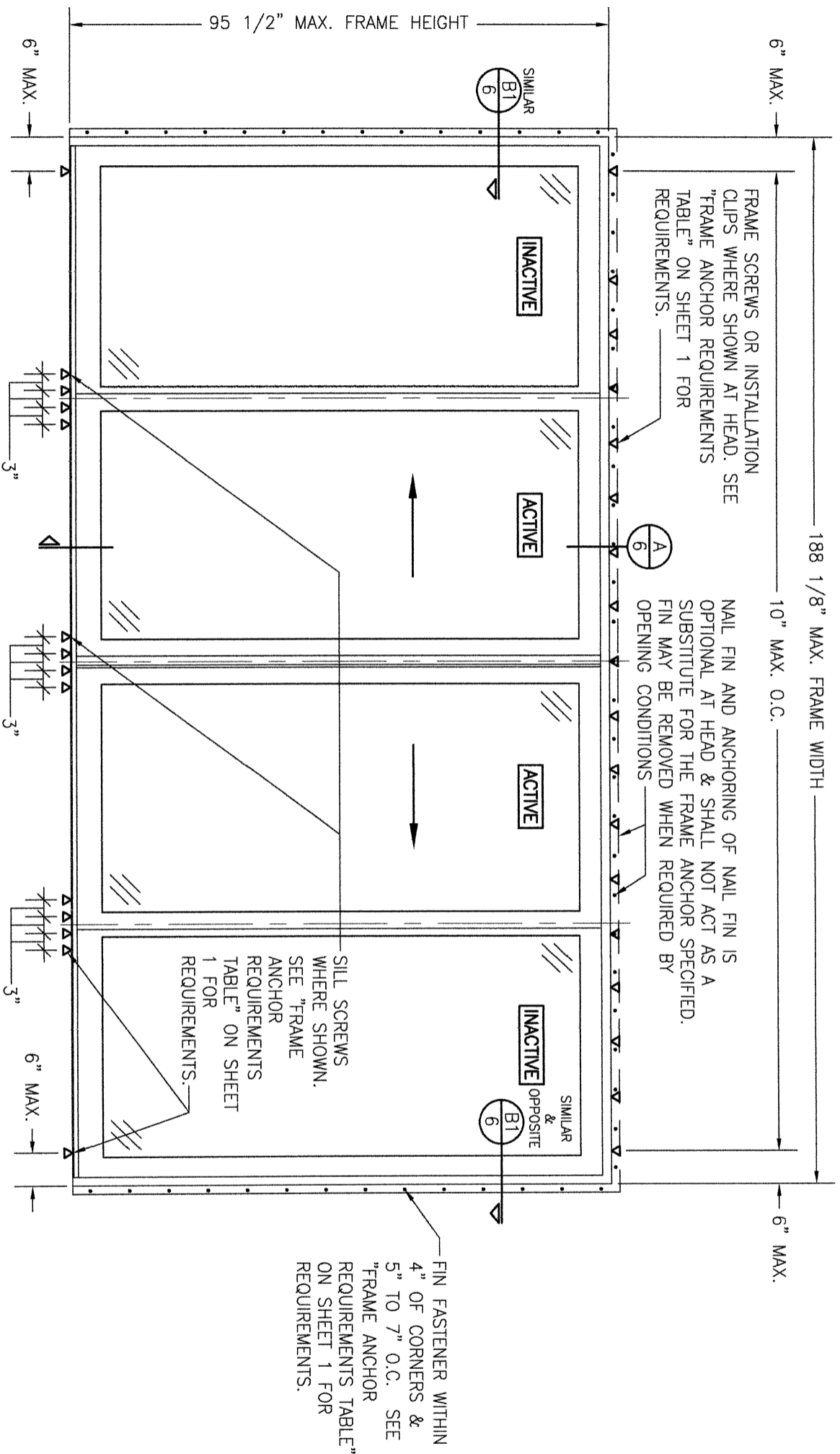
DRAWING TITLE: **LIFESTYLE WITH HGP SERIES FRENCH & CONTEMPORARY NON-IMPACT SLIDING DOOR**

CONSULTANTS: **W. W. SCHAEFER ENGINEERING & CONSULTING, P.A.**
 25601 AYSEN DRIVE
 PUNTA GORDA, FL 33983
 PHONE: 561-744-3424

MANUFACTURER: **PELLA CORPORATION**

 102 MAIN STREET
 PELLA, IA 50219
 641-621-1000


CERTIFICATION

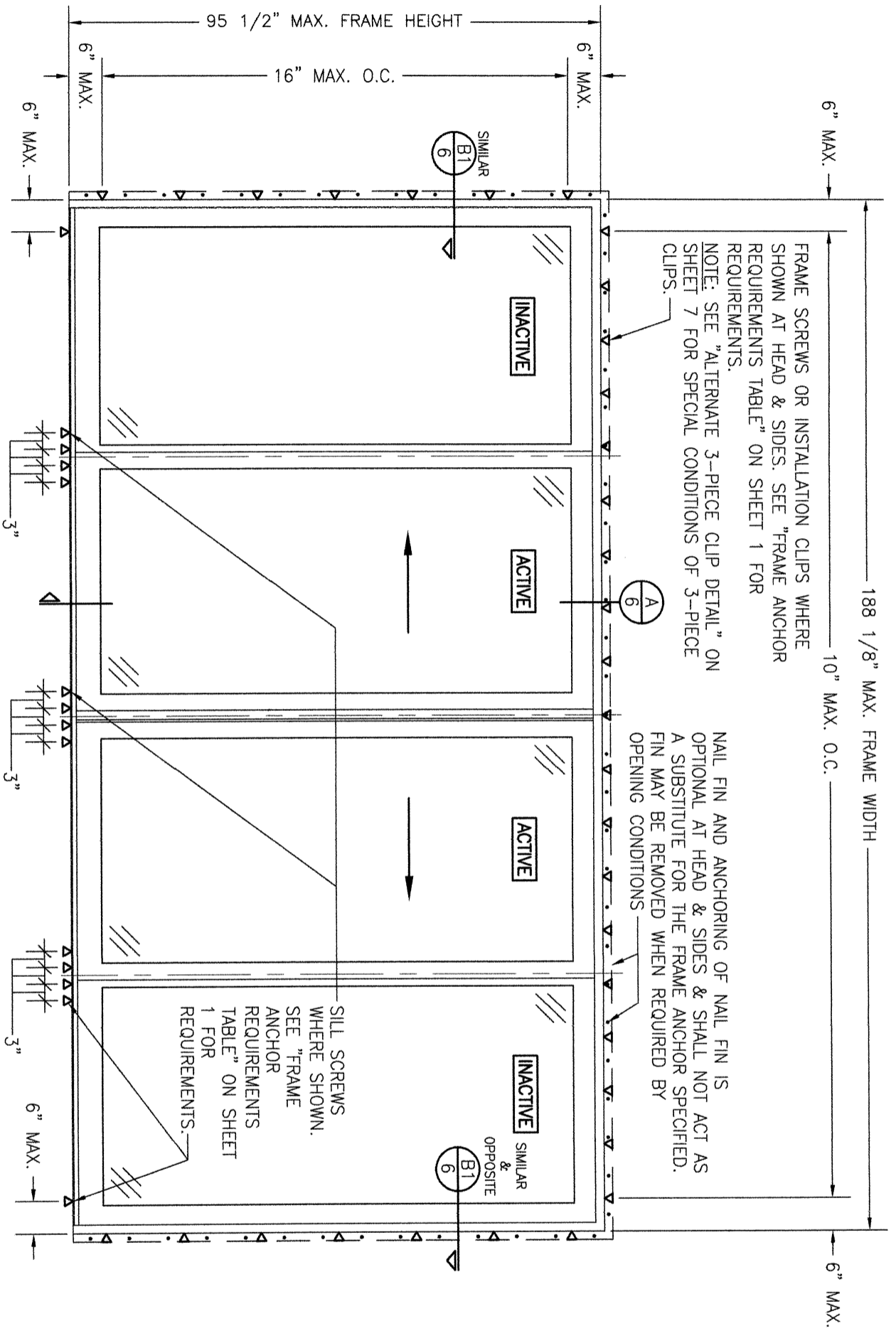
WARREN W. SCHAEFER, P.E.
 P.E. NO. 44135



**EXTERIOR ELEVATION:
4-PANEL SLIDING DOOR**
SCALE: 1/2" = 1'-0"
(NAIL FIN MOUNT CONDITION)

ALLOWABLE DESIGN PRESSURE	
(CONTEMPORARY & FRENCH STYLE 4-PANEL SLIDING DOOR)	
+/- 25 PSF	
(1) CONTEMPORARY & FRENCH ARE THE SAME EXCEPT THE DOOR PANEL STILES & RAILS OF THE FRENCH ARE TALLER THAN THE CONTEMPORARY.	

DRAWING NO. 1659 REV. E	SHEET NO. 4 OF 8	CERTIFICATION WARREN W. SCHAEFER, P.E. P.E. NO. 44135		DRAWING TITLE LIFESTYLE WITH HGP SERIES FRENCH & CONTEMPORARY NON-IMPACT SLIDING DOOR		CONSULTANTS W. W. SCHAEFER ENGINEERING & CONSULTING, P.A. 25601 AYSEN DRIVE PUNTA GORDA, FL 33983 PHONE: 561-744-3424		MANUFACTURER  PELLA CORPORATION 102 MAIN STREET PELLA, IA 50219 641-621-1000		NO.	REVISION DESCRIPTION	BY	DATE	DRAWN BY: W.R.M.	CHECKED BY: W.M.S.
		DATE: 04/13/09	PLOT: 1-24	NO.	REVISION DESCRIPTION	BY	DATE	NO.	REVISION DESCRIPTION	BY	DATE				



FRAME SCREWS OR INSTALLATION CLIPS WHERE SHOWN AT HEAD & SIDES. SEE "FRAME ANCHOR REQUIREMENTS TABLE" ON SHEET 1 FOR REQUIREMENTS.
 NOTE: SEE "ALTERNATE 3-PIECE CLIP DETAIL" ON SHEET 7 FOR SPECIAL CONDITIONS OF 3-PIECE CLIPS.


NAIL FIN AND ANCHORING OF NAIL FIN IS OPTIONAL AT HEAD & SIDES & SHALL NOT ACT AS A SUBSTITUTE FOR THE FRAME ANCHOR SPECIFIED. FIN MAY BE REMOVED WHEN REQUIRED BY OPENING CONDITIONS.

SILL SCREWS WHERE SHOWN, SEE "FRAME ANCHOR REQUIREMENTS TABLE" ON SHEET 1 FOR REQUIREMENTS.

EXTERIOR ELEVATION:
 4-PANEL SLIDING DOOR
 SCALE: 1/2" = 1'-0"
 (FRAME SCREW OR CLIP MOUNT CONDITION)

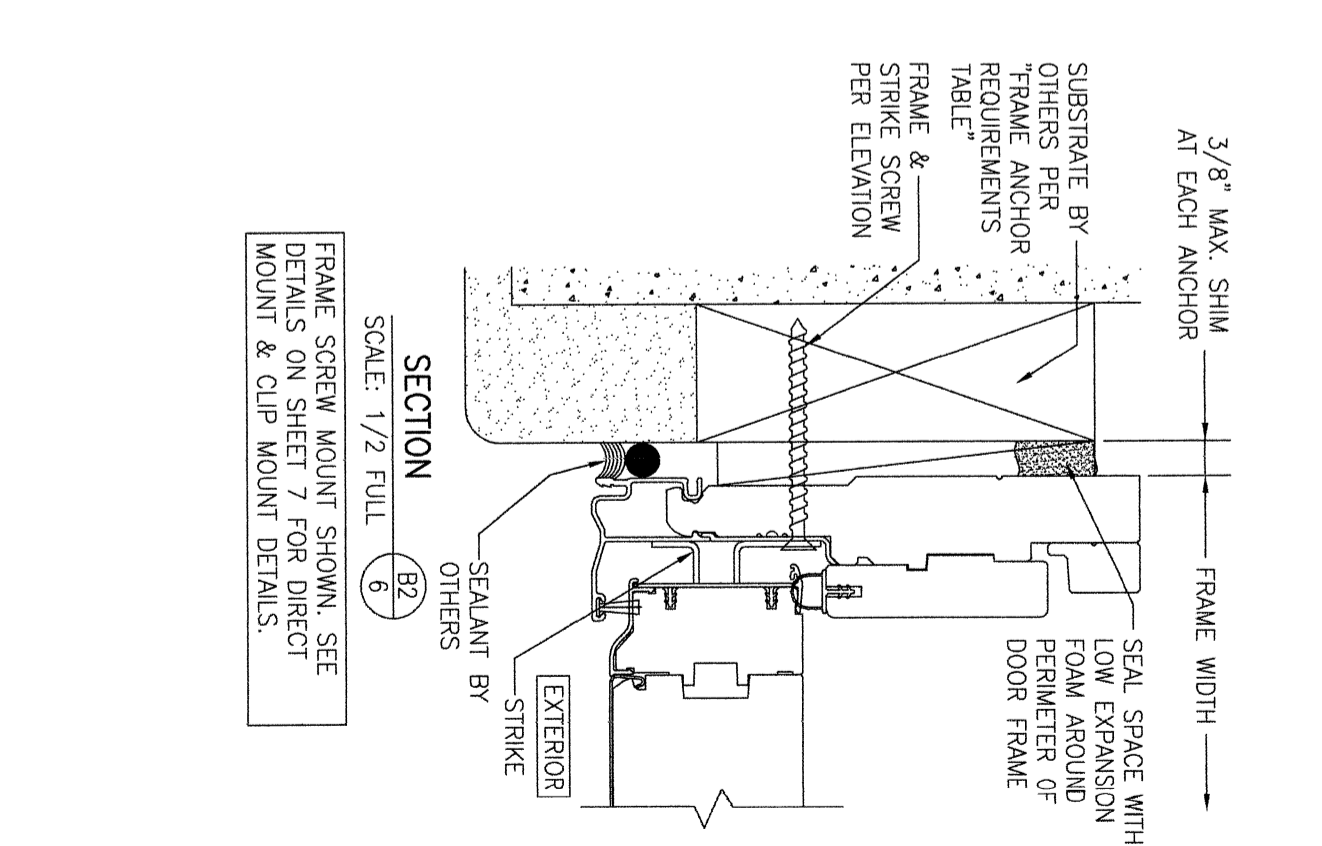
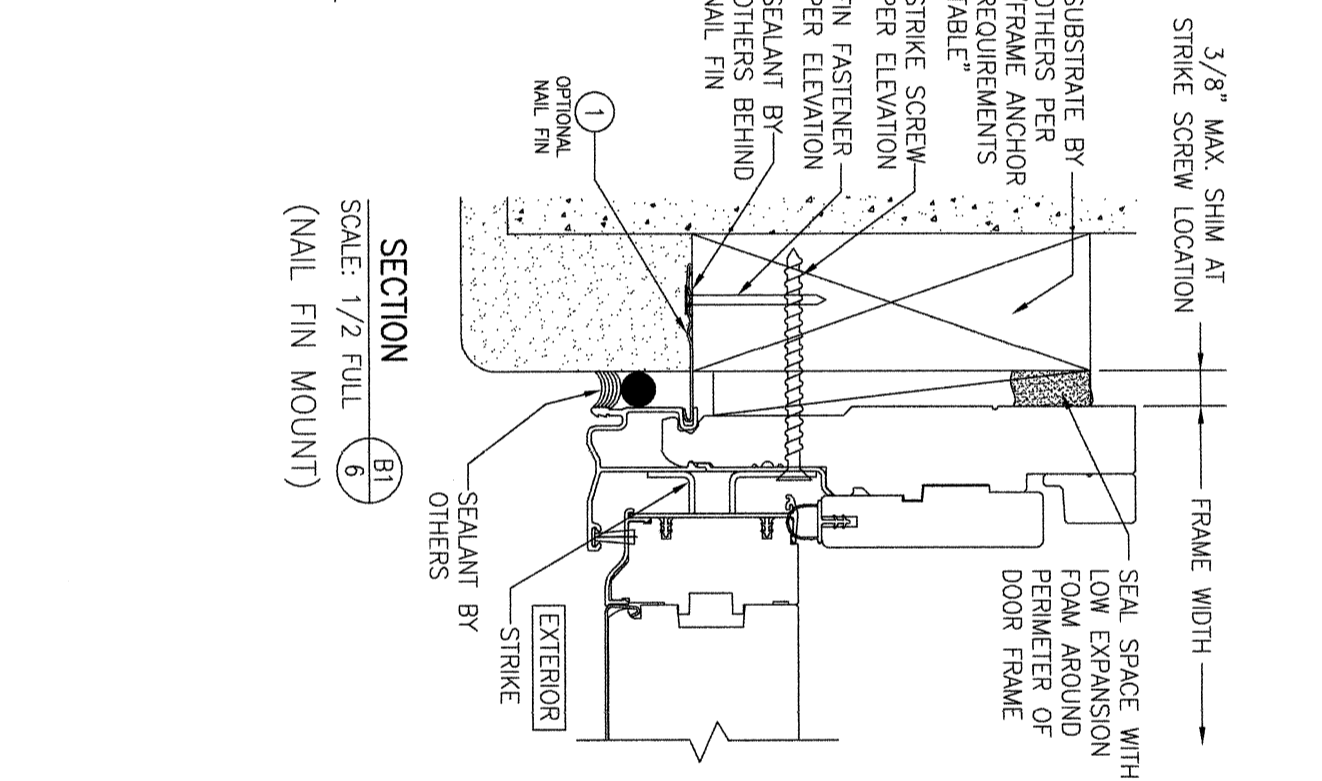
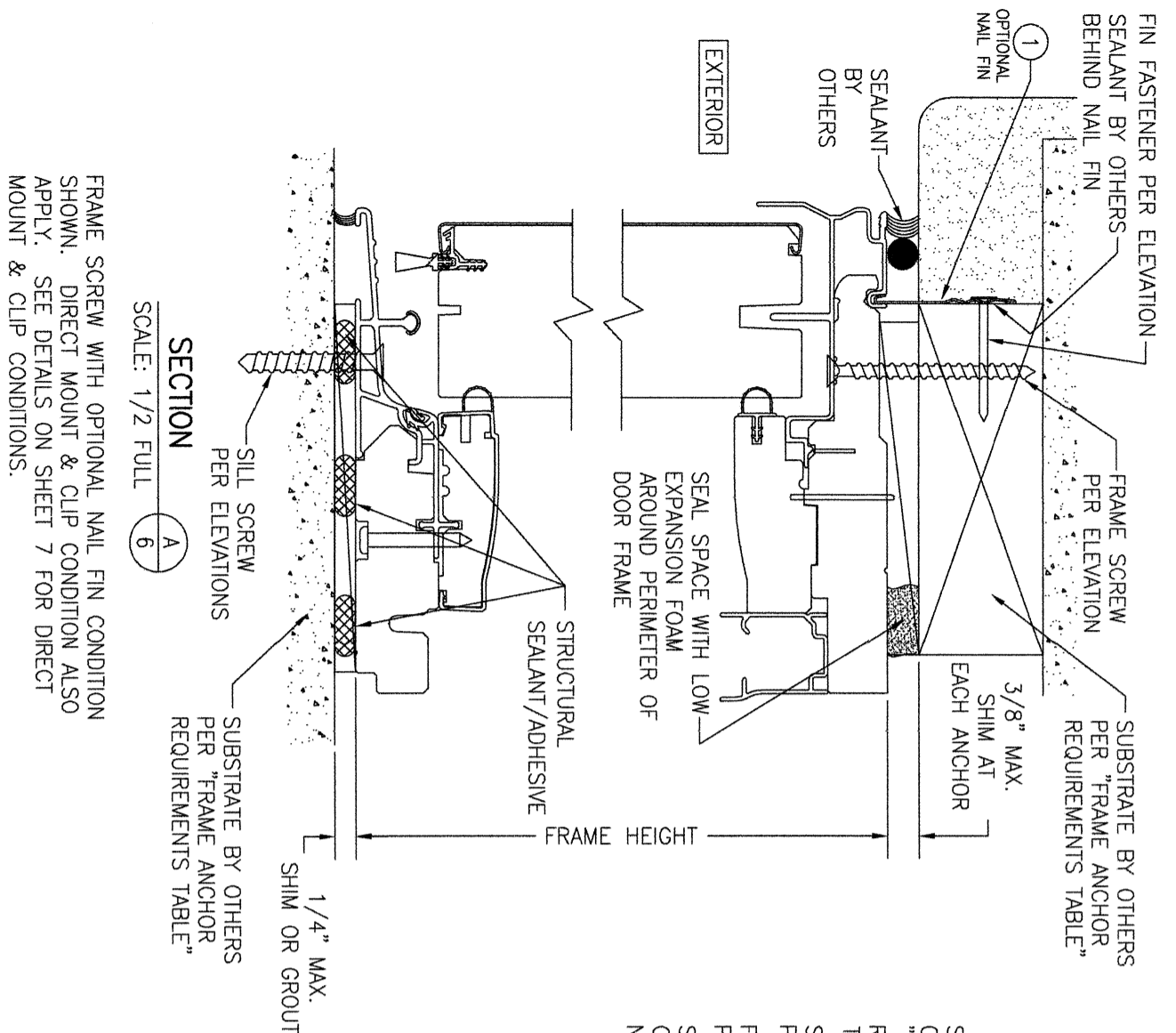
ALLOWABLE DESIGN PRESSURE	
(CONTEMPORARY & FRENCH STYLE 4-PANEL SLIDING DOOR)	
+/- 25 PSF	
(1) CONTEMPORARY & FRENCH ARE THE SAME EXCEPT THE DOOR PANEL STILES & RAILS OF THE FRENCH ARE TALLER THAN THE CONTEMPORARY.	

NO.	REVISION DESCRIPTION	BY	DATE

DRAWING TITLE LIFESTYLE WITH HGP SERIES FRENCH & CONTEMPORARY NON-IMPACT SLIDING DOOR	
CONSULTANTS W. W. SCHAEFER ENGINEERING & CONSULTING, P.A. 25601 AYSEN DRIVE PUNTA GORDA, FL 33983 PHONE: 561-744-3424	MANUFACTURER  PELLA CORPORATION 102 MAIN STREET PELLA, IA 50219 641-621-1000

CERTIFICATION	WARREN W. SCHAEFER, P.E. P.E. NO. 44135
DRAWING NO. 1659	REV. E
SHEET NO. 5	OF 8

DRAWN BY: W.R.M.	CHECKED BY: W.M.S.
DATE: 04/13/09	



FRAME SCREW WITH OPTIONAL NAIL FIN CONDITION SHOWN. DIRECT MOUNT & CLIP CONDITION ALSO APPLY. SEE DETAILS ON SHEET 7 FOR DIRECT MOUNT & CLIP CONDITIONS.

FRAME SCREW MOUNT SHOWN. SEE DETAILS ON SHEET 7 FOR DIRECT MOUNT & CLIP MOUNT DETAILS.

NO.	REVISION DESCRIPTION	BY	DATE
1-2			

DRAWN BY: W.R.M.
 CHECKED BY: W.W.S.
 DATE: 04/13/09

DRAWING TITLE: **LIFESTYLE WITH HGP SERIES FRENCH & CONTEMPORARY NON-IMPACT SLIDING DOOR**

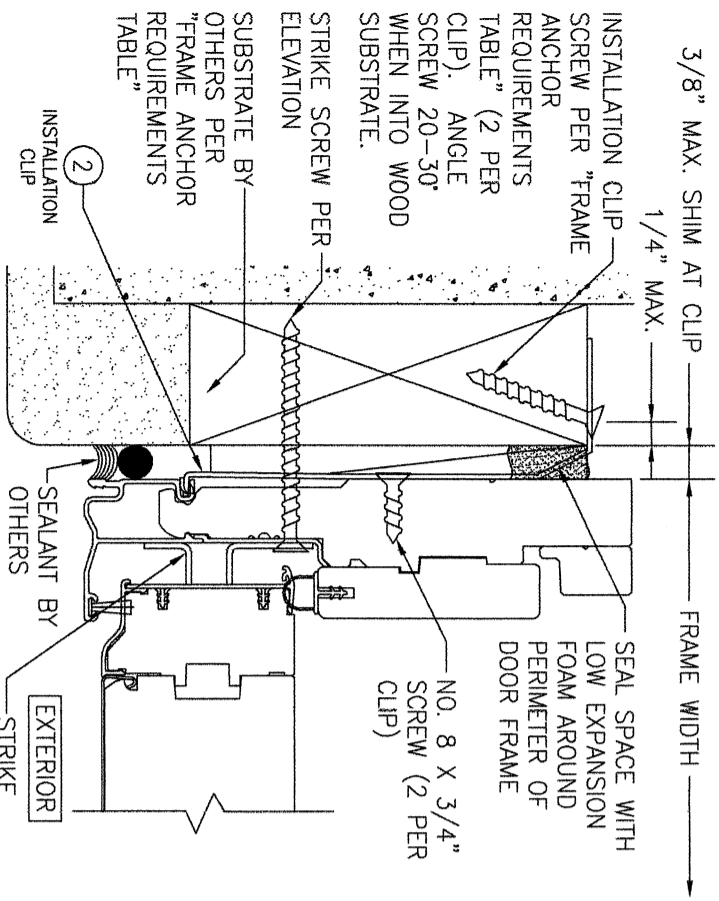
CONSULTANTS: **W. W. SCHAEFER ENGINEERING & CONSULTING, P.A. (CA 6809)**
 7480 150TH COURT NORTH
 PALM BEACH GARDENS, FL 33418
 PHONE: 561-744-3424

MANUFACTURER: **PELLA CORPORATION**
 102 MAIN STREET
 PELLA, IA 50219
 641-621-1000

CERTIFICATION

WARREN W. SCHAEFER, P.E.
 P.E. NO. 44135

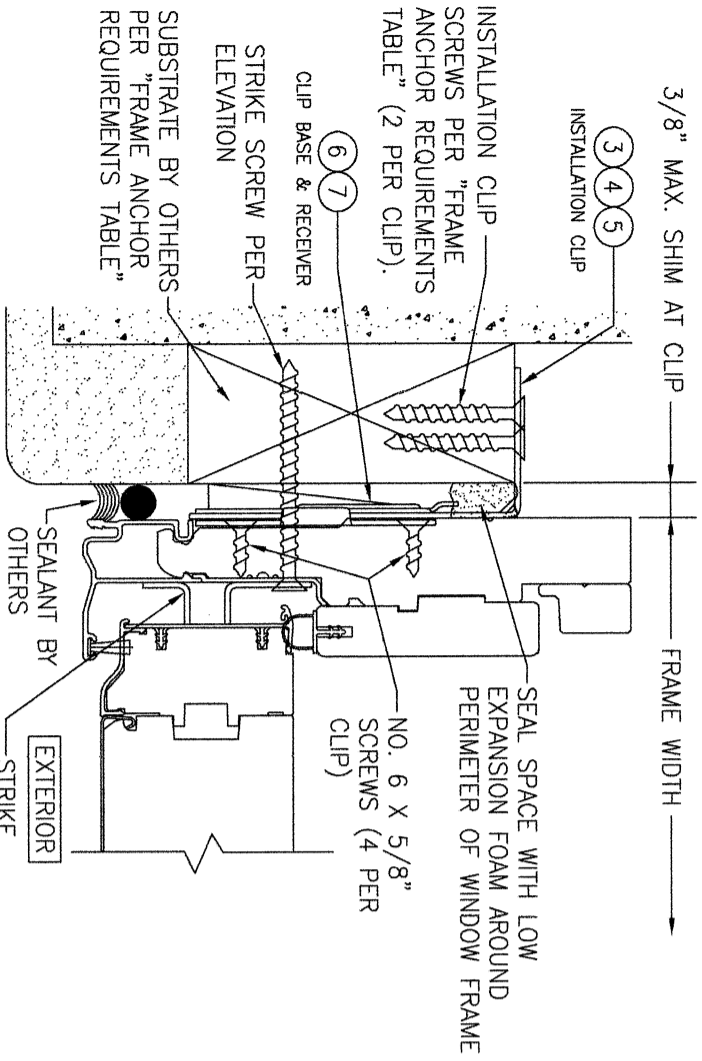
DRAWING NO.: **1659**
 REV: **E**
 SHEET NO.: **6** OF **8**



STANDARD INSTALLATION CLIP DETAIL

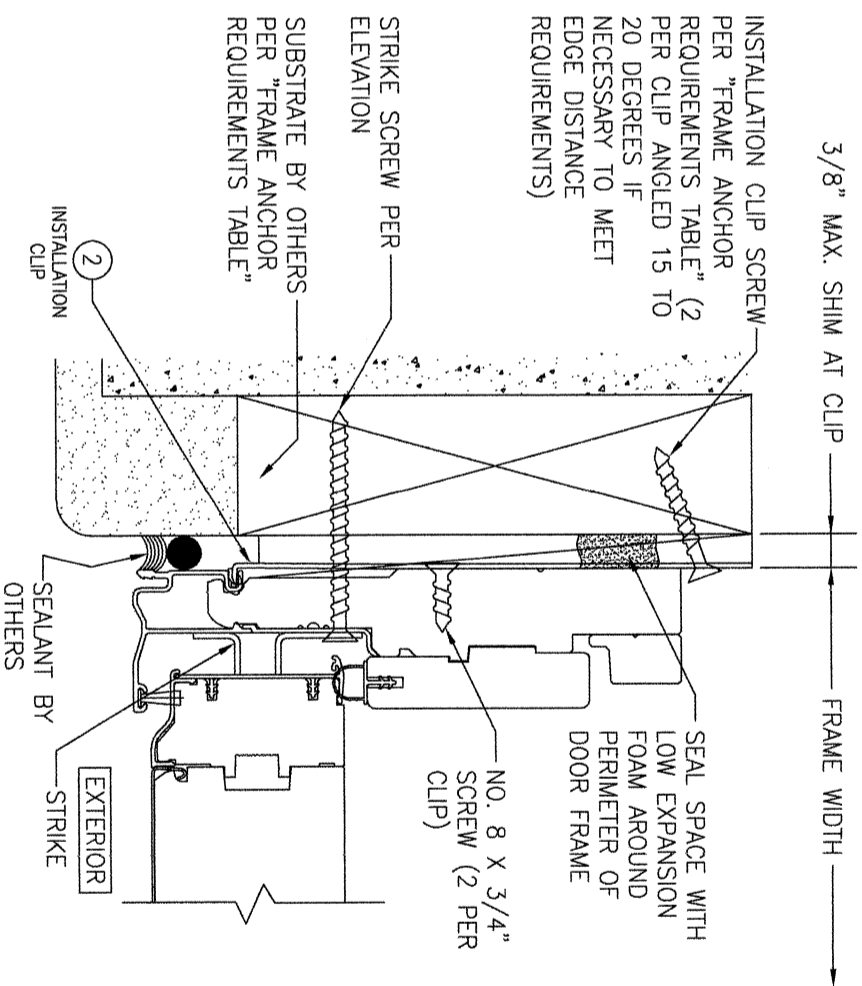
(BENT CLIP CONDITION)

(SIDE SECTION SHOWN; HEAD IS INSTALLED THE SAME)
 (FOR DETAIL NOT SHOWN, SEE OTHER SECTIONS)
 (INSTALLATION CLIPS ARE NOT APPLICABLE AT THE SILL)



ALTERNATE 3-PIECE INSTALLATION CLIP DETAIL

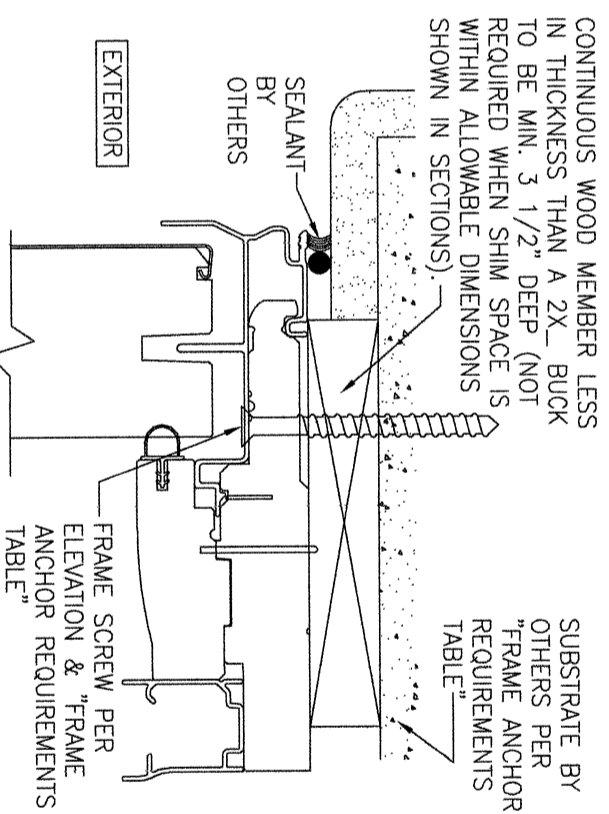
(HEAD SECTION SHOWN; SIDES ARE INSTALLED THE SAME)
 (FOR DETAIL NOT SHOWN, SEE OTHER SECTIONS)
 (INSTALLATION CLIPS ARE NOT APPLICABLE AT THE SILL)
 NOTE: 3-PIECE CLIPS MAY ACT AS SPOT OR FULL REPLACEMENTS OF EITHER THE FRAME SCREWS, STANDARD BENT CLIPS OR STRAIGHT CLIPS. THEREFORE, ANY ONE OR ALL OF THE FRAME SCREWS/CLIPS SPECIFIED IN THE ELEVATION(S) MAY BE REPLACED WITH 3-PIECE CLIPS.



ALTERNATE INSTALLATION CLIP DETAIL

(STRAIGHT CLIP CONDITION)

(SIDE SECTION SHOWN; HEAD IS INSTALLED THE SAME)
 (FOR DETAIL NOT SHOWN, SEE OTHER SECTIONS)
 (INSTALLATION CLIPS ARE NOT APPLICABLE AT THE SILL)



OPTIONAL DIRECT MOUNT DETAIL TO SUBSTRATE WITH SPACER

(HEAD SECTION SHOWN; SILL & SIDES ARE INSTALLED THE SAME)
 (FOR DETAIL NOT SHOWN, SEE OTHER SECTIONS)

NO.	REVISION DESCRIPTION	BY	DATE

DRAWN BY: W.R.M.
 CHECKED BY: W.W.S.
 DATE: 04/13/09

DRAWING TITLE: **LIFESTYLE WITH HGP SERIES FRENCH & CONTEMPORARY NON-IMPACT SLIDING DOOR**

CONSULTANTS: **W. W. SCHAEFER ENGINEERING & CONSULTING, P.A. (CA 6809)**
 7480 150TH COURT NORTH
 PALM BEACH GARDENS, FL 33418
 PHONE: 561-744-3424

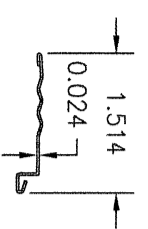
MANUFACTURER: **PELLA CORPORATION**
 102 MAIN STREET
 PELLA, IA 50219
 641-621-1000



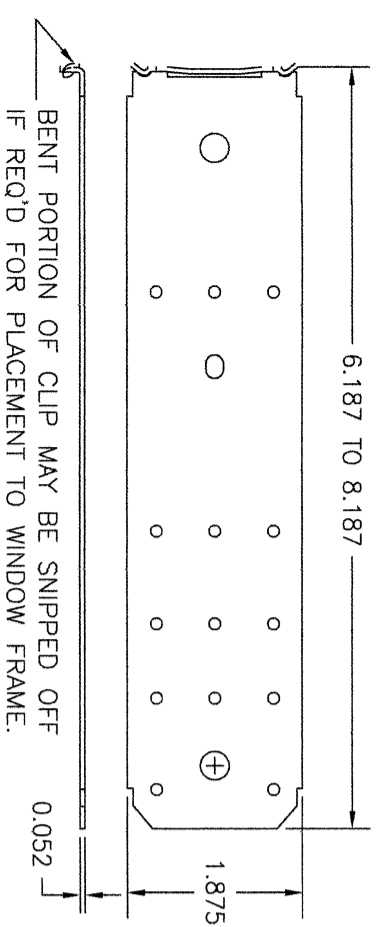
CERTIFICATION: **WARREN W. SCHAEFER, P.E.**
 P.E. NO. 44135

DRAWING NO.: **1659**
 REV.: **E**

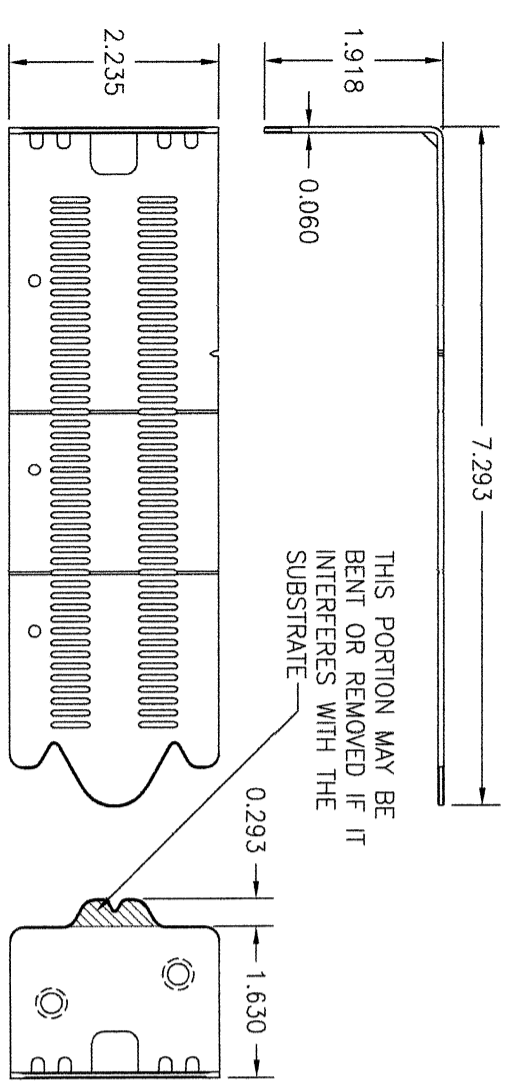
SHEET NO.: **7** OF **8**



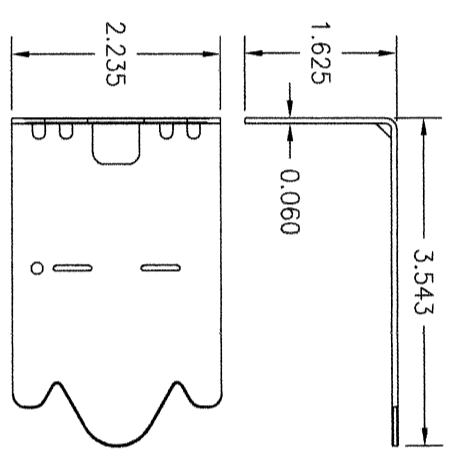
① NAIL FIN
(3003 H-14 ALUMINUM)



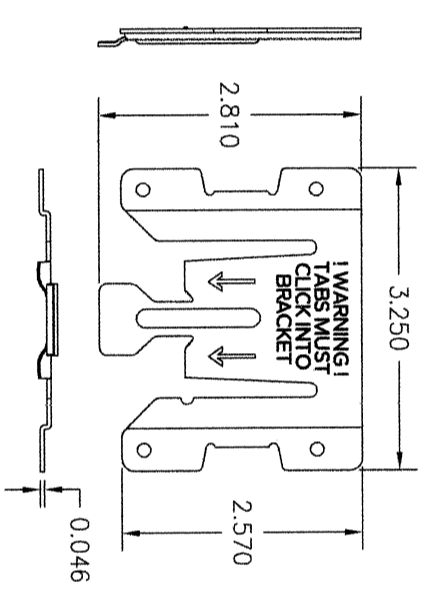
② FRAME INSTALLATION CLIP
(50 KSI STEEL)



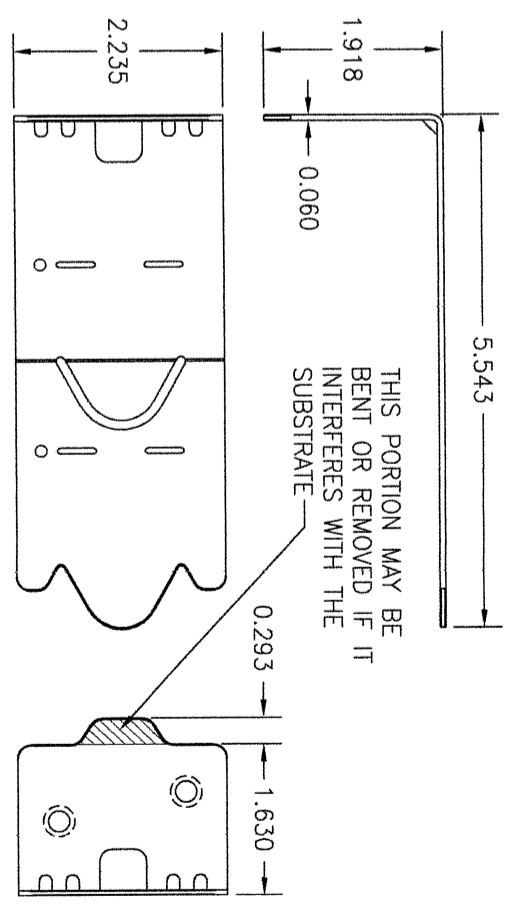
⑤ FRAME INSTALLATION CLIP
(50 KSI STEEL)
ADJUSTABLE CLIP USED WITH 3-PIECE CLIP SYSTEM



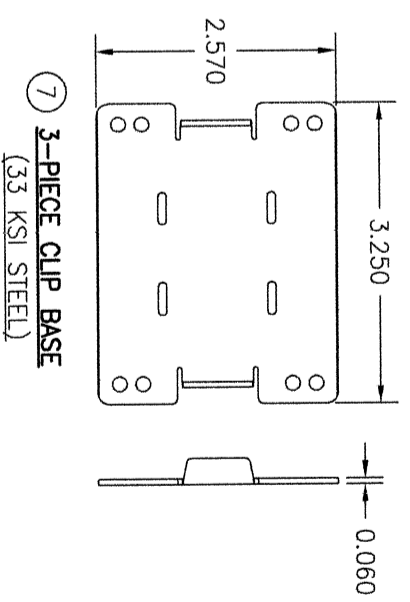
③ FRAME INSTALLATION CLIP
(50 KSI STEEL)
SHORT CLIP USED WITH 3-PIECE CLIP SYSTEM
(TYPICALLY USED WITH 2X4 BUCK SUBSTRATE)



⑥ 3-PIECE CLIP RECEIVER
(50 KSI STEEL)



④ FRAME INSTALLATION CLIP
(50 KSI STEEL)
LONG CLIP USED WITH 3-PIECE CLIP SYSTEM
(TYPICALLY USED WITH 2X6 BUCK SUBSTRATE,
BUT MAY ALSO BE USED WITH 2X4)




⑦ 3-PIECE CLIP BASE
(33 KSI STEEL)

NO.	REVISION DESCRIPTION	BY	DATE

DRAWING TITLE: LIFESTYLE WITH HGP SERIES FRENCH & CONTEMPORARY NON-IMPACT SLIDING DOOR

CONSULTANTS: W. W. SCHAEFER ENGINEERING & CONSULTING, P.A. (CA 6809)
7480 150TH COURT NORTH
PALM BEACH GARDENS, FL 33418
PHONE: 561-744-3424

MANUFACTURER: PELLA CORPORATION
102 MAIN STREET
PELLA, IA 50219
641-621-1000



CERTIFICATION

WARREN W. SCHAEFER, P.E.
P.E. NO. 44135